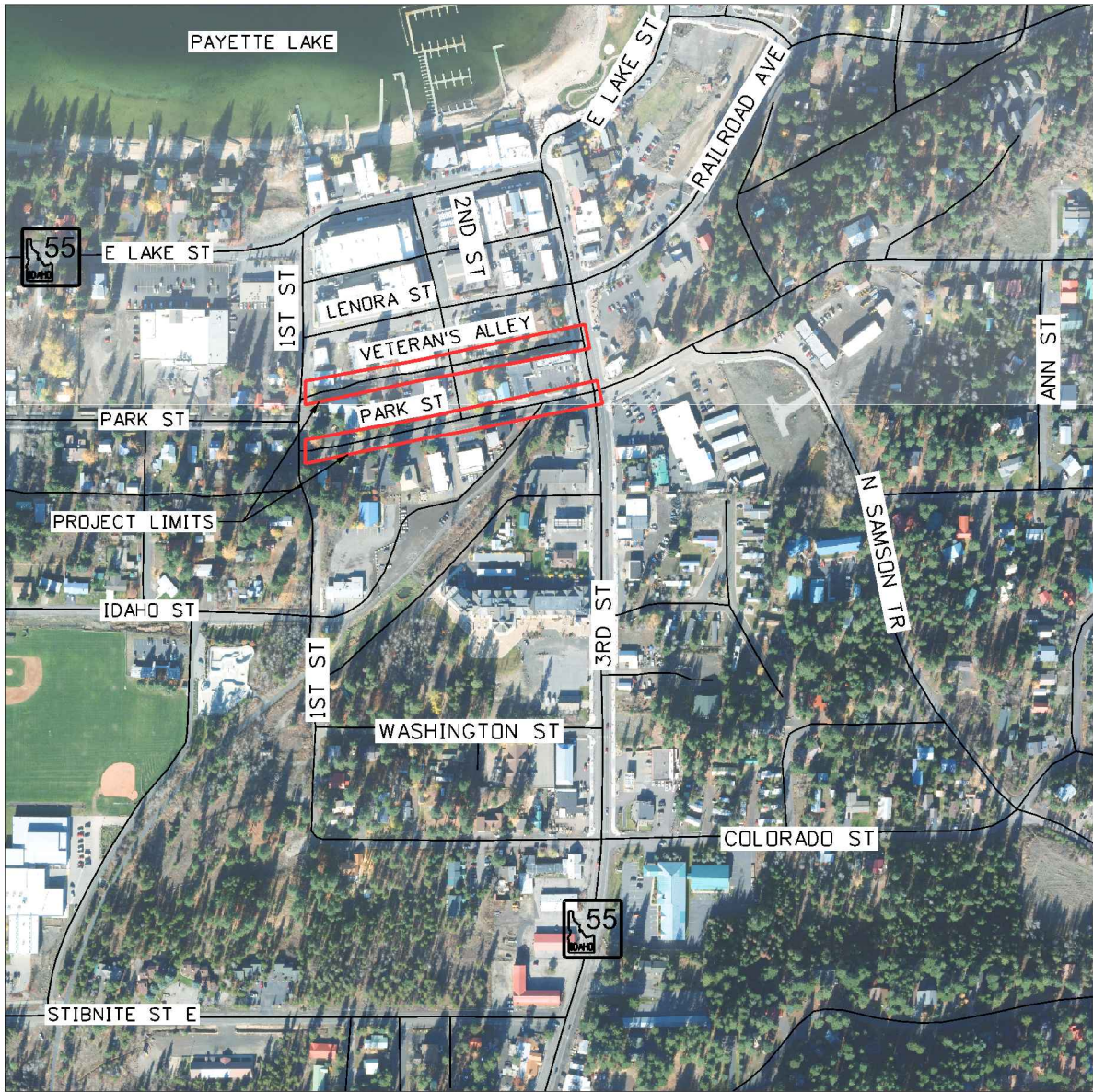
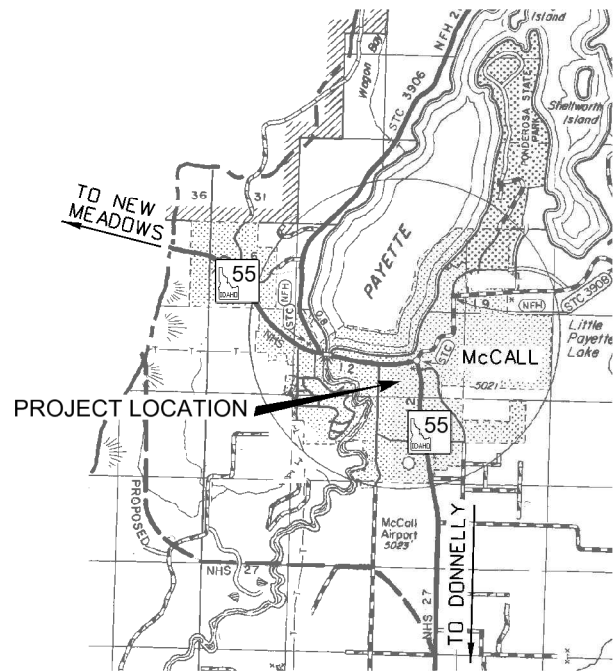



-CITY OF McCALL-
-McCALL DOWNTOWN CORE-
-PHASE 2B-
-PARK STREET AND VETERAN'S ALLEY-
-T 18N R 3E SECTION 9-



| INDEX TO SHEETS | |
|-----------------|--|
| SHEET # | DESCRIPTION |
| 1 | TITLE SHEET |
| 2 | PROJECT OVERVIEW LAYOUT |
| 3 | GENERAL NOTES AND LEGEND SHEET |
| 4-7 | TYPICAL SECTIONS |
| 8-9 | REMOVAL SHEETS |
| 10-13 | ROADWAY PLAN AND PROFILE SHEETS |
| 14-19 | ROADWAY GRADING PLAN SHEETS |
| 20-24 | PEDESTRIAN CURB RAMP PLAN SHEETS |
| 24 | APPROACH GRADING DATA SHEET |
| 25-26 | LANDSCAPE PLAN AND DETAIL SHEETS |
| 27-30 | ROADWAY DETAIL SHEETS |
| 31-35 | STORMWATER PLAN AND PROFILE SHEETS |
| 36 | STORMWATER DETAIL SHEET |
| 37 | RETAINING WALL PLAN AND PROFILE SHEET |
| 38 | RETAINING WALL DETAIL SHEET |
| 39-40 | ELECTRICAL AND ILLUMINATION PLAN SHEETS |
| 41 | ELECTRICAL AND ILLUMINATION DETAIL SHEET |
| 42-43 | IRRIGATION PLAN AND DETAIL SHEETS |
| 44 | SIGNING AND STRIPING SHEET |
| 45-48 | UTILITY PLAN SHEETS |
| 49 | TRAFFIC CONTROL STAGING OVERVIEW |
| 50-55 | TRAFFIC CONTROL PLAN SHEETS |
| 56 | TRAFFIC CONTROL BUSINESS SIGNING SHEET |

| TVT BID ALTERNATIVE | |
|---------------------|---------------------------------|
| SHEET # | DESCRIPTION |
| C-1 | REMOVAL SHEET AND CIVIL DETAILS |
| C-2 | ROAD PLAN AND PROFILE |

APPROVED FOR CONSTRUCTION
City of McCall

Date: 4/28/20 By: 



VICINITY MAP

